



# PFRStat

## Departmental Measures

### May 2016

#### MUO



The Medical Unit Overload (MUO) plan had 2 activations in May 2016 compared to 6 activations in May 2015. The plan was activated a total of 3 times in the last quarter compared to 18 times in the same quarter one year ago.

#### CARES



Cardiac survival rates for the month of May 2016 were at an overall rate of 18.2% (2 cases out of 11). In May 2015 the survival rate was at 0.0% (0 cases out of 9).

#### Community Outreach



A total of 41 Public Education programs were offered to an audience of 3,221 in May 2016 compared to 31 programs and an audience of 1,915 in May 2015. One CPR class with 4 total students were taught in May 2016 compared to 3 CPR classes with 119 total students in May 2015.

Transported patients were received at 12 area hospitals in May 2016.

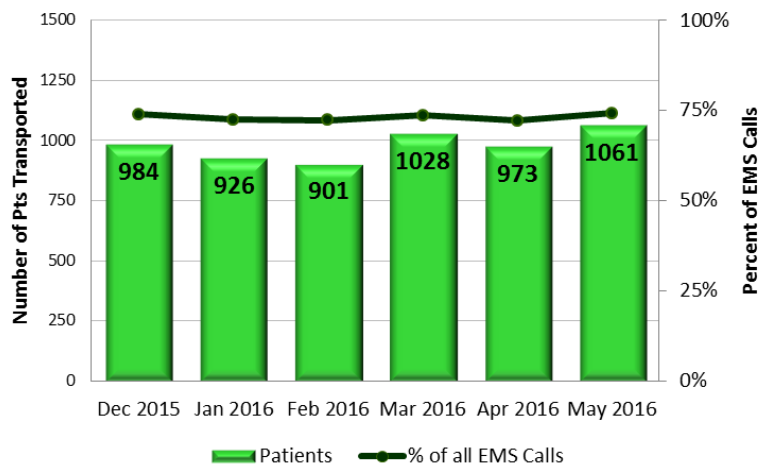
Highest Reivership:

**MCP**  
51.18%

**PHOP**  
19.89%

**MRMC**  
8.95%

#### EMS Patient Transports

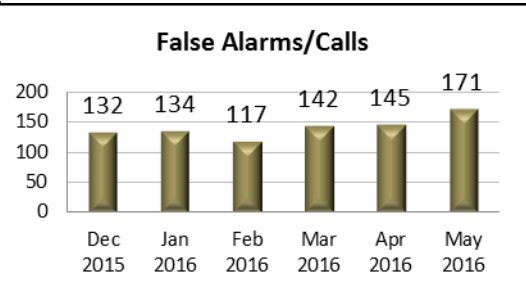
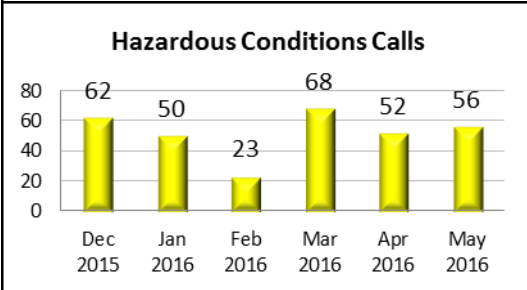
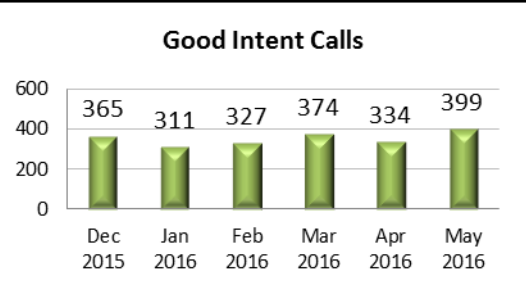
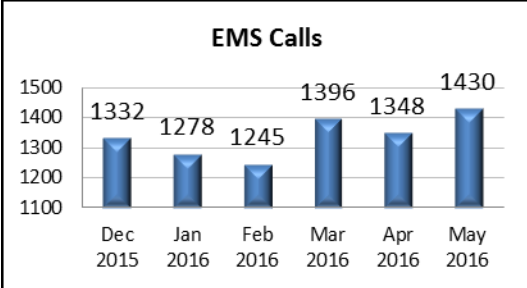
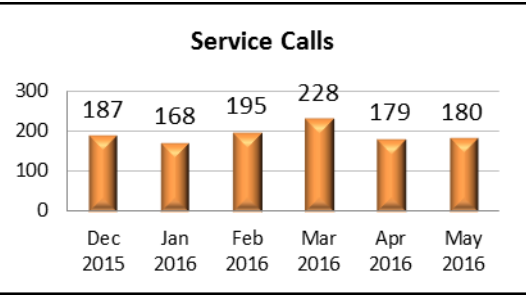
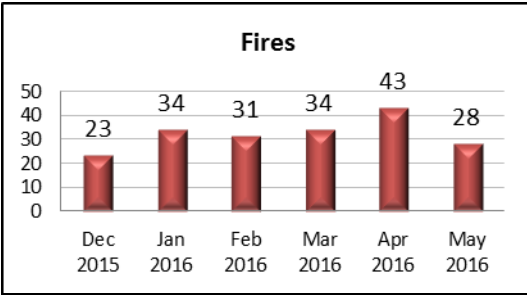




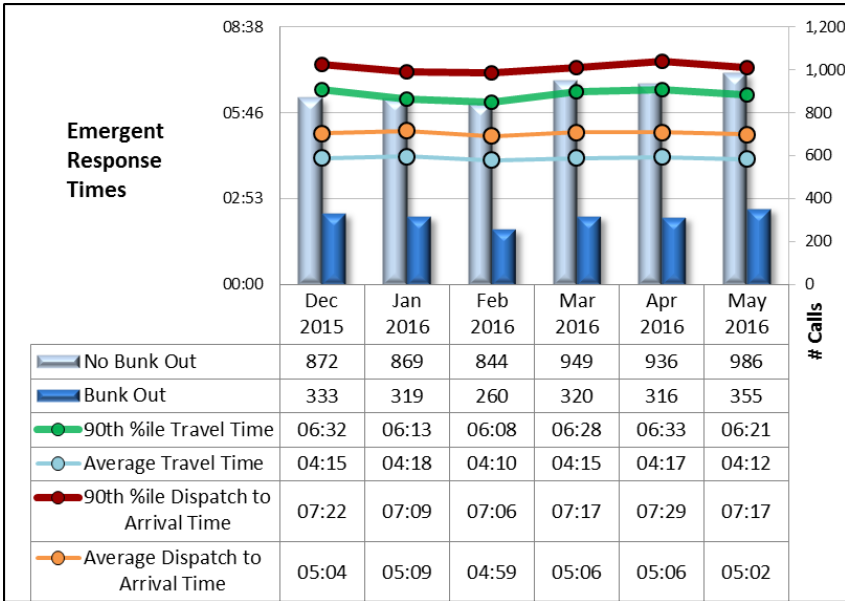
**CALLS FOR SERVICE**

Total Incidents for the month of May: **2,272**  
 Change from previous month: **+7.93%**  
 Change from same month of previous year: **+6.57%**  
 Variance from quarterly average: **+2.96%**

**CALLS BY NFIRS TYPE**

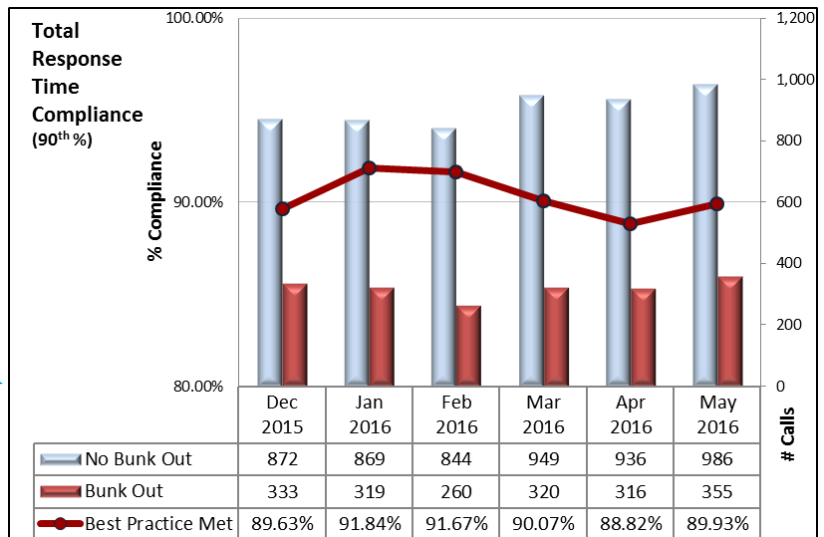


# Response Time

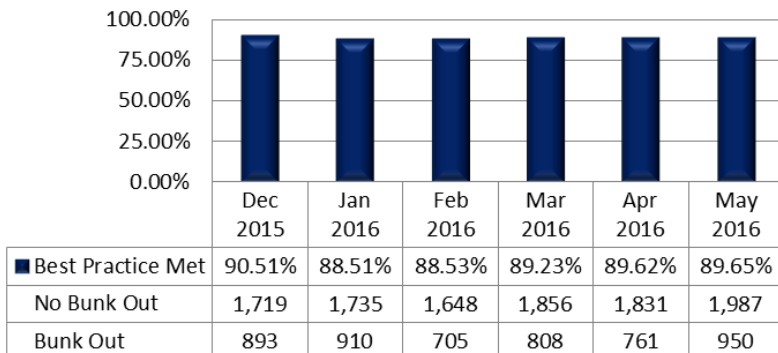


All times for response and travel decreased in May 2016 for the first month in 3 months.

Compliance percentages increased slightly in May 2016 but still remains below the 90% compliance target.



## Turnout Compliance



Turnout times have generally increased over the past six months and dropped below 90% compliance for January-May 2016

# FIRE PREVENTION

## May 2016 Plan Reviews

Construction: 178  
Engineering: 44

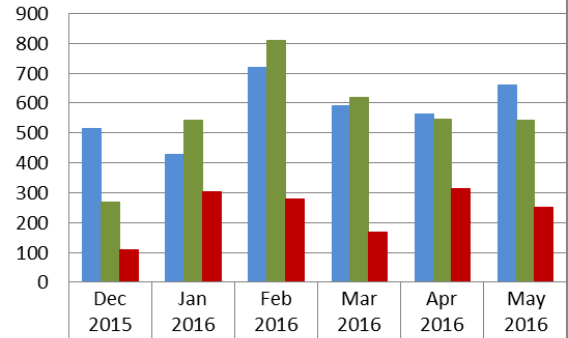
## Fires with > \$10K Loss:

May 2016: 5  
May 2015: 7

## Investigations

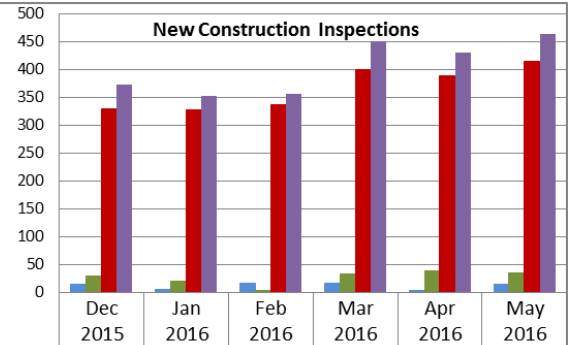
May 2016: 2  
May 2015: 2

Existing Building Inspections



Scheduled	514	428	719	590	563	659
Completed	270	544	811	619	546	542
Violations	110	305	278	167	313	250

New Construction Inspections



Overtime	14	5	17	16	3	14
Expedited	30	21	3	34	39	35
Standard	329	327	336	400	388	415
Total	373	353	356	450	430	464

## Survey Responses: March 2016

Response Time	Quality of Service	Courtesy of Personnel	Appearance of Personnel
<u>Exceeded:</u> 41 (79%)	<u>Exceeded:</u> 45 (87%)	<u>Exceeded:</u> 49 (94%)	<u>Exceeded:</u> 41 (79%)
<u>Met:</u> 11 (21%)	<u>Met:</u> 7 (13%)	<u>Met:</u> 3 (6%)	<u>Met:</u> 11 (21%)
<u>Did Not Meet:</u> 0 (0%)	<u>Did Not Meet:</u> 0 (0%)	<u>Did Not Meet:</u> 0 (0%)	<u>Did Not Meet:</u> 0 (0%)