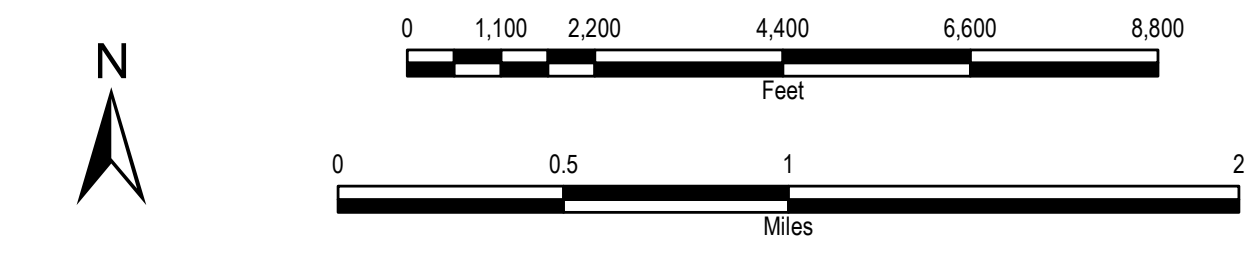
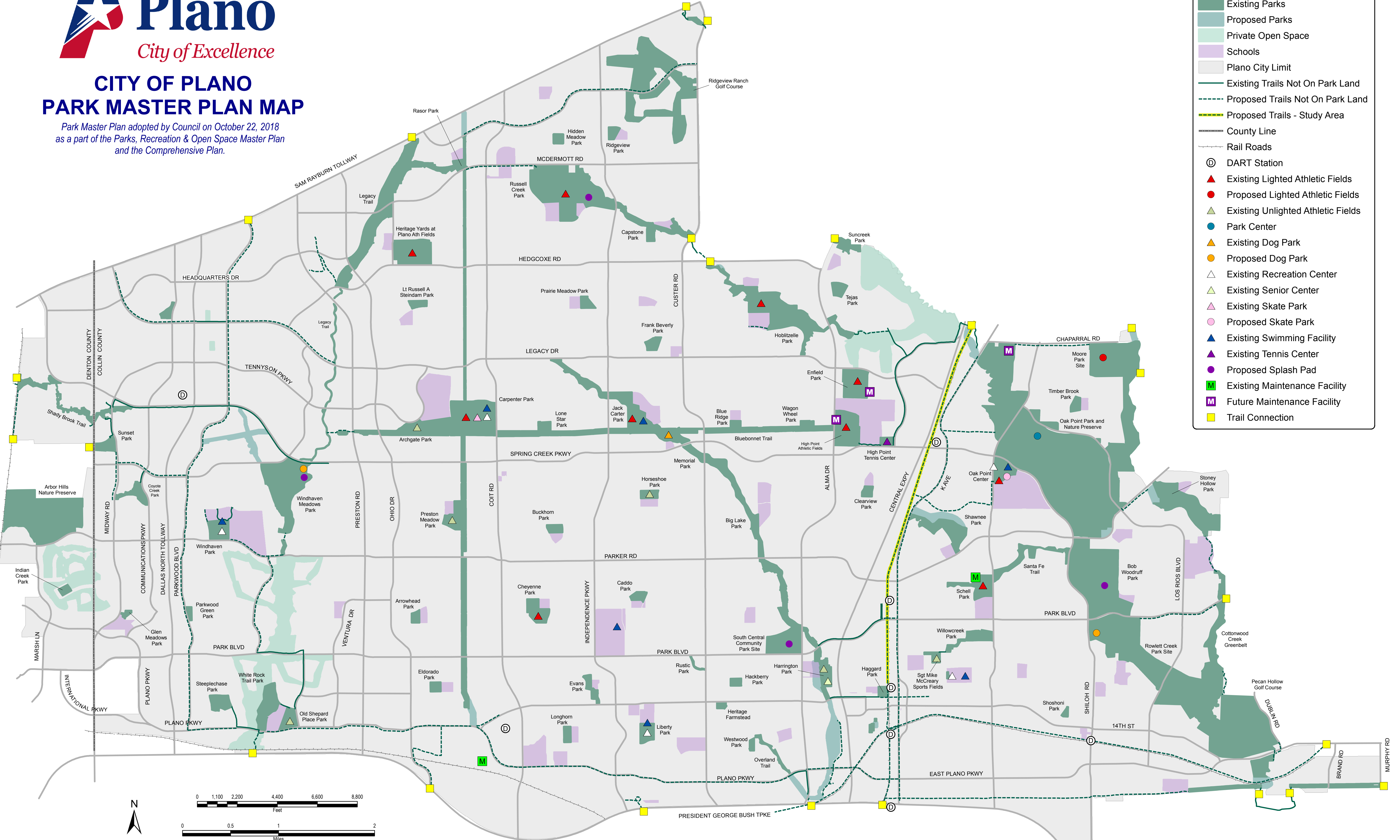


# CITY OF PLANO PARK MASTER PLAN MAP

Park Master Plan adopted by Council on October 22, 2018  
as a part of the Parks, Recreation & Open Space Master Plan  
and the Comprehensive Plan.

### Legend

- Existing Parks
- Proposed Parks
- Private Open Space
- Schools
- Plano City Limit
- Existing Trails Not On Park Land
- Proposed Trails Not On Park Land
- Proposed Trails - Study Area
- County Line
- Rail Roads
- D DART Station
- Existing Lighted Athletic Fields
- Proposed Lighted Athletic Fields
- Existing Unlighted Athletic Fields
- Park Center
- Existing Dog Park
- Proposed Dog Park
- Existing Recreation Center
- Existing Senior Center
- Existing Skate Park
- Proposed Skate Park
- Existing Swimming Facility
- Existing Tennis Center
- Proposed Splash Pad
- Existing Maintenance Facility
- Future Maintenance Facility
- Trail Connection



The locations of proposed sites, trails and facilities are subject to change.