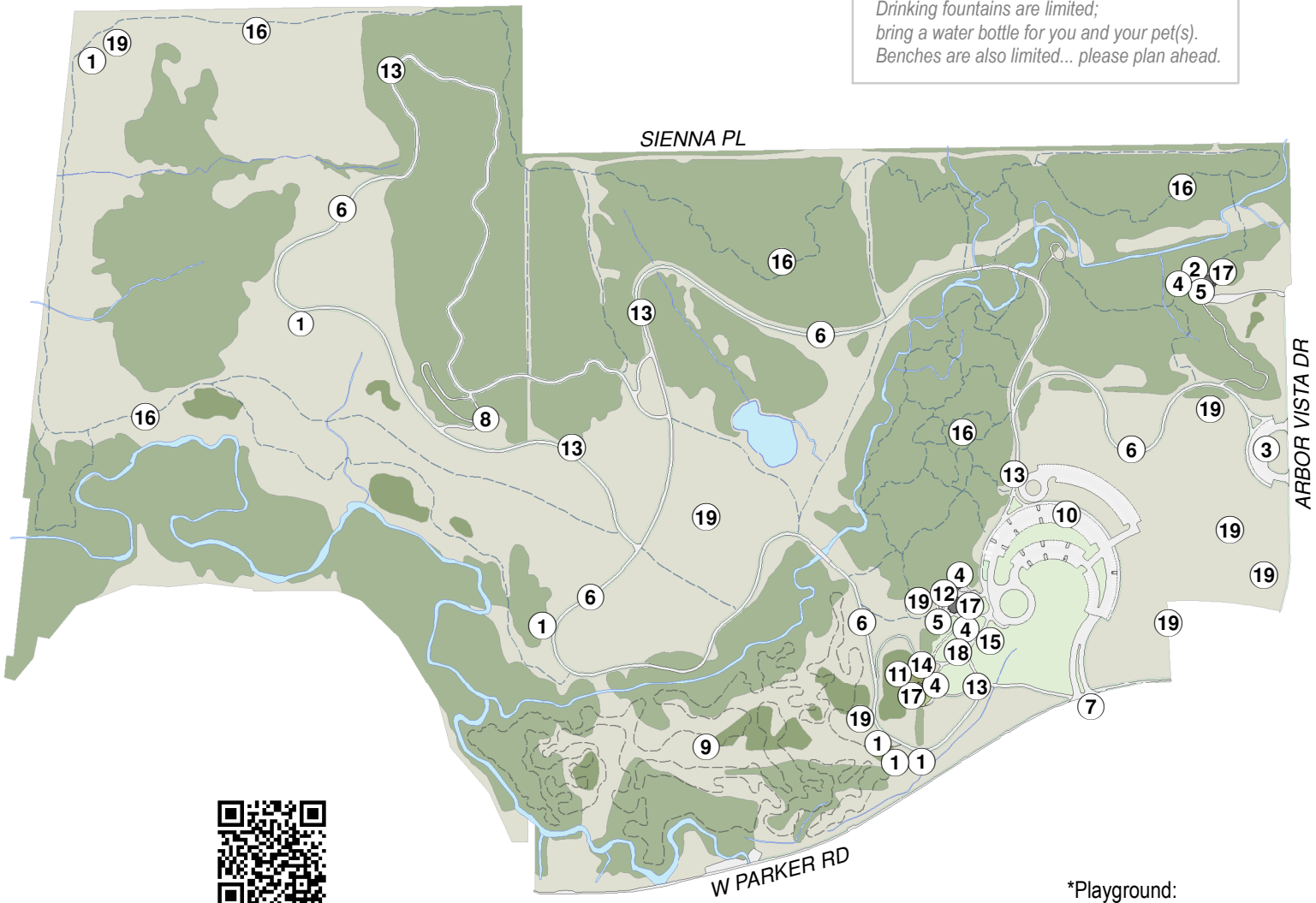
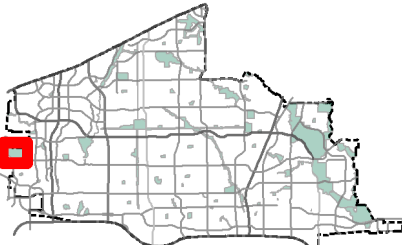


T:\naB 8/11/2020 L:\w\rcuser\2020 Park Web Maps\MXD\ArborHillsNaturePreserveAmenities.mxd

*Helpful Hints:
Drinking fountains are limited;
bring a water bottle for you and your pet(s).
Benches are also limited... please plan ahead.*



(Tap or Scan Here)

Pavilion (R) = Reserve Pavilion Online:
Other Pavilions and shade structures are first come first serve.

*Playground:
Ages (2 -12)
Baby Swings
Adapted Swing

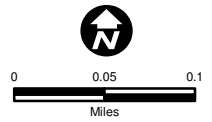
Features

- 1.) Bench
- 2.) Day Camp
- 3.) Day Camp Parking
- 4.) Drinking Fountain
- 5.) Grills
- 6.) Hike and Bike Trail (2.6 mi.)
- 7.) Main Entrance
- 8.) Observation Tower
- 9.) Off road bike trails (2.7 mi.)
- 10.) Parking
- 11.) Pavilion
- 12.) Pavilion (R) w/Tables
- 13.) Pet Waste Station
- 14.) *Playground
- 15.) Restrooms
- 16.) Soft Surface Trails (4.7 mi.)
- 17.) Table
- 18.) Wi-Fi
- 19.) Wildlife Box



City of Plano Park Planning Division
8/11/2020

Arbor Hills Nature Preserve
6701 W. Parker Rd., Plano, TX 75093



(Tap or Scan Here)
Plano Parks & Trails